

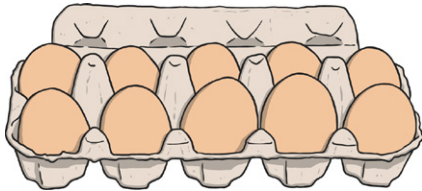


# Finding Halves

This week we have been learning about half. We know that  $\frac{1}{2}$  is one of 2 same size pieces and that 2 halves make 1 whole. We are collecting halves to display in the classroom.

Find as many halves as you can and make a list or take photos of them. Here are some ideas:

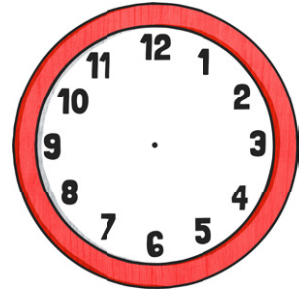
Find  $\frac{1}{2}$  a box of eggs.



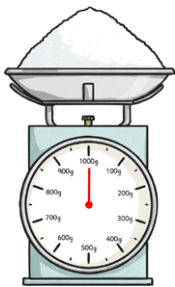
Travel  $\frac{1}{2}$  the way to school.



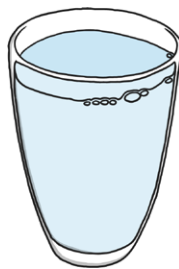
Find  $\frac{1}{2}$  an hour.



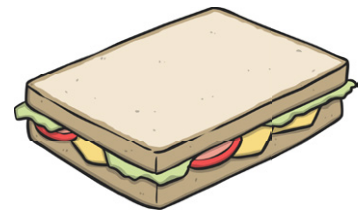
Find  $\frac{1}{2}$  a kilo of sugar.



Find something  $\frac{1}{2}$  full.



Find  $\frac{1}{2}$  of a sandwich.



Find  $\frac{1}{2}$  half of a piece of fruit.



Find  $\frac{1}{2}$  of 10p.



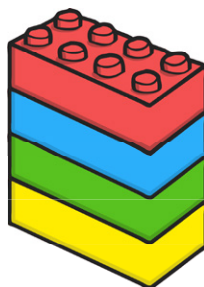
Find  $\frac{1}{2}$  a pint of milk.



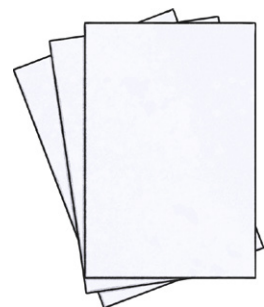
Find  $\frac{1}{2}$  of a block of chocolate.



Find  $\frac{1}{2}$  of a brick tower.



Fold something in  $\frac{1}{2}$ .

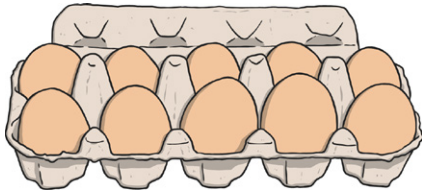


# Finding Halves

This week we have been learning about half. We know that  $\frac{1}{2}$  is one of 2 same size pieces and that 2 halves make 1 whole. We are collecting halves to display in the classroom.

Find as many halves as you can and make a list or take photos of them. Here are some ideas:

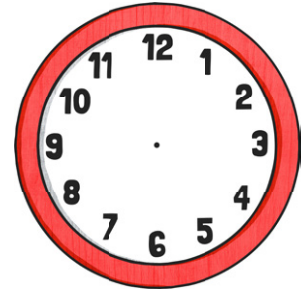
Find  $\frac{1}{2}$  a box of eggs.



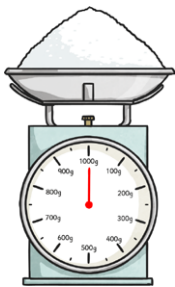
Travel  $\frac{1}{2}$  the way to school.



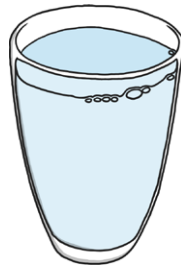
Find  $\frac{1}{2}$  an hour.



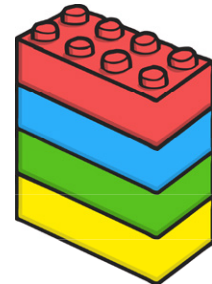
Find  $\frac{1}{2}$  a kilo of sugar.



Find something  $\frac{1}{2}$  full.



Find  $\frac{1}{2}$  of brick tower.



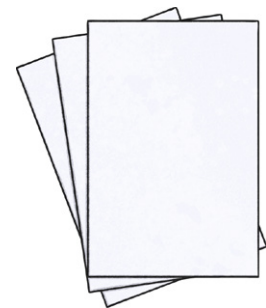
Find  $\frac{1}{2}$  half of a piece of fruit.



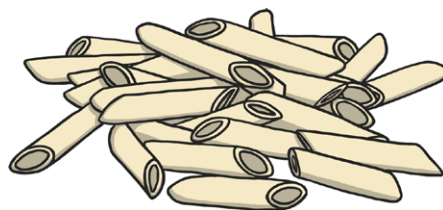
Find  $\frac{1}{2}$  of 10p.



Fold something in  $\frac{1}{2}$ .



Can you find  $\frac{1}{2}$  of an amount? Count out 12 pieces of pasta and find  $\frac{1}{2}$ .  
Try this with different numbers. Are there some numbers that you can't find  $\frac{1}{2}$  of?

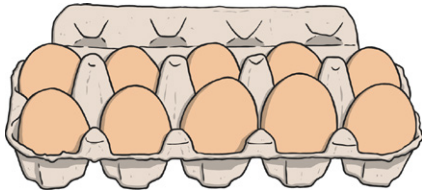


# Finding Halves

This week we have been learning about half. We know that  $\frac{1}{2}$  is one of 2 same size pieces and that 2 halves make 1 whole. We are collecting halves to display in the classroom.

Find as many halves as you can and make a list or take photos of them. Here are some ideas:

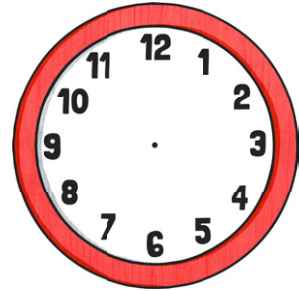
Find  $\frac{1}{2}$  a box of eggs.



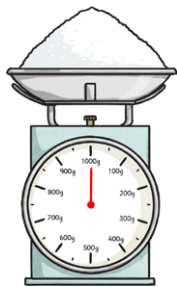
Travel  $\frac{1}{2}$  the way to school.



Find  $\frac{1}{2}$  an hour.



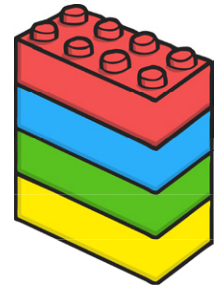
Find  $\frac{1}{2}$  a kilo of sugar.



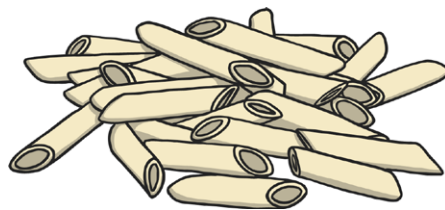
Find  $\frac{1}{2}$  of 10p.



Find  $\frac{1}{2}$  of brick tower.



Can you find  $\frac{1}{2}$  of an amount? Count out 12 pieces of pasta and find  $\frac{1}{2}$ .  
Try this with different numbers. Are there some numbers that you can't find  $\frac{1}{2}$  of?



Hide  $\frac{1}{2}$  of your objects. Can someone guess how many objects you have altogether?  
Can you guess how many objects there are when someone else hides  $\frac{1}{2}$  of them?

